



focus

www.PCIMidwest.org

Mike Johnsrud, Executive Director • info@pcimidwest.org

spring 26

INVESTING IN EXCELLENCE



2026 SCHOLARSHIP RECIPIENTS

At PCI Midwest, we see students as emerging professionals who will drive the future of the precast industry. Our annual scholarship program is designed to support students pursuing degrees in Engineering, Construction Management, Concrete Industry Management or related disciplines across IA, KS, MN, MO, NE, ND, SD and Western WI.

Our scholarship program is designed to ease educational expenses while motivating students to engage with—and potentially pursue careers within—the precast community. In addition to their financial awards, recipients are eligible to apply for stipends to attend PCI Midwest and other industry-related events and meetings, giving them a head start on building their professional networks with the precast concrete community. This year's applicants demonstrated technical aptitude, leadership, and a genuine passion for the specialized field of precast concrete.



Eugene K. Assuah-Damoah
University of North Dakota
PhD in Civil Engineering



Mina Gerges
University of Nebraska - Lincoln
PhD in Construction Engineering



Alana Kerr
University of Nebraska - Lincoln
Master of Architecture



Lola Ogundare
University of Kansas
PhD in Civil Engineering



Tiana Peterson
University of Wisconsin - Stout
BS in Construction Management



Tania Tavakkoli, PE
University of Kansas
Masters in Public Administration

The integrity of this program relies on the dedication of our volunteer judges. We extend our sincere gratitude to this year's panel for their time, expertise, and commitment to the next generation of industry leaders.



Todd Culp, PE
Coreslab Structures (Omaha) Inc.



Matthew Fall
County Prestress & Precast



John Hopkins
Country Prestress & Precast



Martin Lane AIA, LEED AP
Enterprise Precast Concrete



Ryan Miles
Taracon Precast



Matt Speedy
Sumiden Wire Products Corporation



Angie Utterback
Leviat

Oppidan Data Center



Data centers are a critical component of infrastructure systems, serving as the backbone of digital services that include everything from internet connectivity and cloud computing to artificial intelligence and telecommunications. Most often designed as basic boxes, the Oppidan Data Center breaks this tradition. The project team delivered a

PCI Design Award-winning precast solution, elevating the aesthetic standards of data center design while meeting the surging technological demands of the region.

Located near a residential area, local jurisdictions required a higher level of aesthetics than the standard prototype.

While original plans called for site-cast tilt-up with metal screens, the team shifted to architectural precast to achieve depth and complexity. This approach avoided a flat, one-dimensional facade, instead utilizing "bump-outs" and structural protrusions that met local requirements and created a more intriguing architectural profile.



"Overall, this data center provides an excellent example of precast concrete blending seamlessly with other materials: brick, glass, large louvers, and mechanical equipment," says Dirk McClure, director of business development with Enterprise Precast Concrete. "Architectural precast also enabled us to significantly transform the more standard, utilitarian approach to data center work, elevating this building's design to a higher level."

Beyond the aesthetic shift, the use of precast concrete brought significant cost and schedule advantages to the construction phase. The ability to manufacture components off-site and deliver them for rapid assembly was essential for a project of this scale. Despite a massive 90,000-square-foot footprint, the Oppidan Data Center reached completion in just 13 months, proving that precast concrete can unlock both high-end design options and industry-leading speed of construction.

"It's a joy to be able to design a data center with this level of upscale architectural features. In many cases, data centers don't have that opportunity and ultimately end up looking more like warehouses. We're proud of the final design for this building and the precast concrete façade was the primary contributor to that success."

-Brenda Ross, Principal at Salas O'Brien

(Adapted from the PCI article written by Mason Nichols, a Grand Rapids, Michigan-based writer and editor.)

Key Project Attributes

- Thin brick façade, unique to data center application
- Off-white and deep charcoal colors with sandblast finish
- Project size: 90,000 sf

Project/Precast Scope

- Local jurisdiction required the Oppidan Data Center to achieve a higher level of aesthetics than more traditional structures, leading the design team to select precast concrete for the effort.
- The precast concrete solution included wall panels, columns, and caps.
- In addition to design versatility, precast concrete delivered cost and schedule advantages to the project, contributing to its fast-tracked completion.

Project Team

Architect: **Salas O'Brien**

Engineer: **Stantec**

Contractor: **Whiting-Turner Contracting Company**

Owner: **Kinban Inc.**

Precaster: **Enterprise Precast Concrete (Kansas City, KS)**

Precast Specialty Engineer: **CEG Engineering**

PCI Certified Erector: **Doherty Steel Inc.**

Other: **ALP Supply**

Altus Group

Architectural Polymers

Chryso

DCS Inc.

JVI Inc.

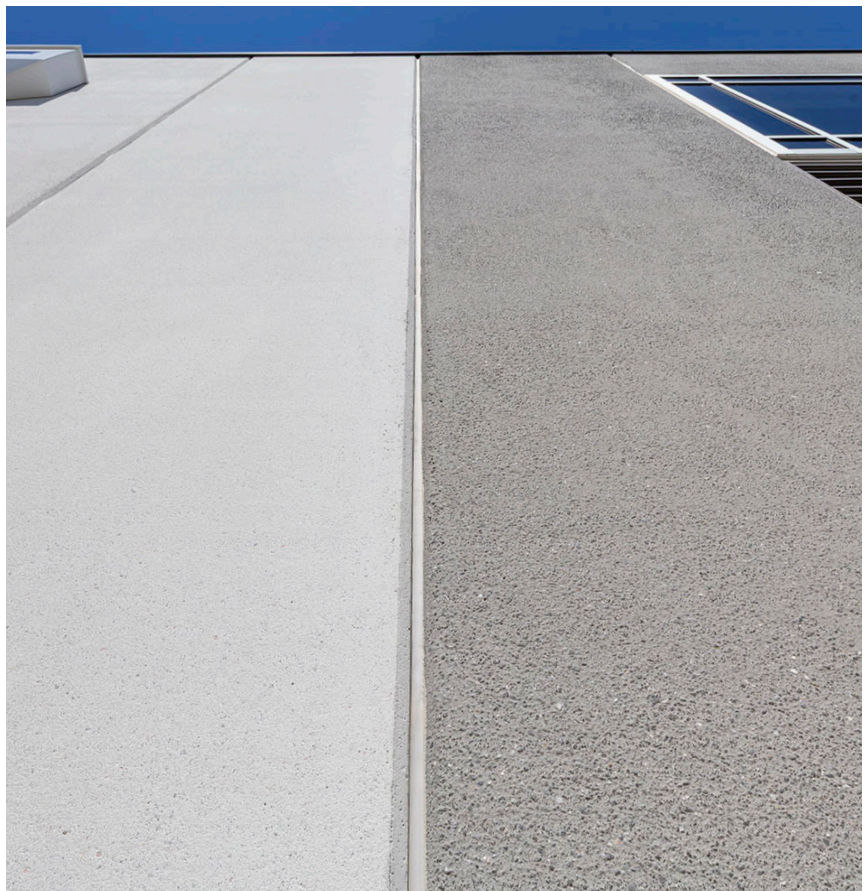
Location: **Olathe, KS**

Year of Completion: **2025**

Photo Credits: **Jacia Phillips | Arch Photo KC**



www.enterpriseprecast.com



Metro Services Building



Wells contributed to the Metro Services Building additions in St. Paul, MN, expanding the existing facility with two distinct structures: a high-end office addition and a vehicle storage and maintenance building. The project supported essential municipal operations while elevating the architectural character of a critical public works campus.

The office addition features a visually striking exterior defined by a highly articulated, perforation-inspired façade. Four unique wall panels were developed and arranged in a non-repeating pattern, creating depth and movement across the building envelope. In contrast, the vehicle storage and maintenance building was designed for performance, housing heavy equipment

in a space built to withstand frequent truck washing, moisture exposure, and daily operational demands. Together, the additions balance thoughtful design with long-term durability, reinforcing infrastructure that serves approximately 450,000 residents in St. Paul.

Early engagement during concept pre-design within a design-build framework allowed the team to evaluate ambitious ideas for constructability, refine system strategies, and align design intent with efficient production and installation. Through detailed sampling, on-site mockups, and lighting evaluations, the team refined concrete mixes and finishes to achieve a contemporary appearance that complements the historic facility.

The vehicle storage and maintenance building utilizes durable prefabricated wall panels and structural double tees designed to endure heavy use and frequent washdowns. These components provide long spans, structural reliability, and resilience in a demanding environment.

Across both additions, the disciplined use of prefabricated systems overcame the primary challenge of balancing complex architectural vision with structural integrity and manufacturing efficiency. The result is a cohesive, high-performing expansion that supports critical infrastructure while delivering enduring design value.



Key project attributes

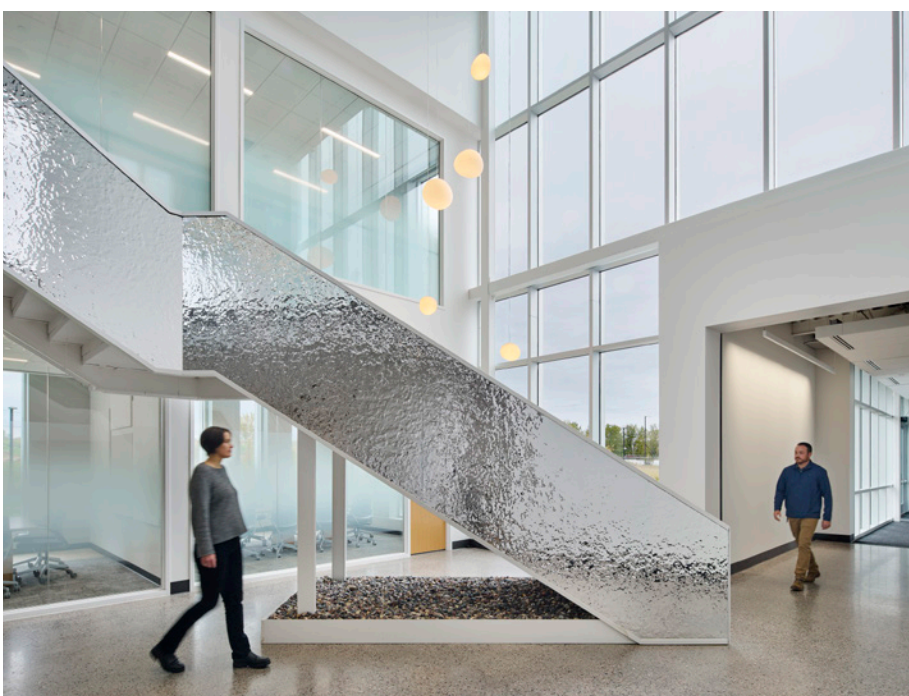
- Total prefabricated building systems approach
- Architectural insulated wall panels (office addition)
- Four unique panel types arranged in a non-repeating façade pattern
- Structural double tees (vehicle storage and maintenance building)
- Long-span roof system for open, flexible interior space
- Durable wall panels designed for frequent truck washing and heavy operational use
- Perforation-inspired façade translated into a structurally efficient panelized system
- Custom concrete mix design refined through sampling and on-site mockups
- Contemporary neutral color palette coordinated with existing historic facility
- Smooth and refined surface finish selected to complement modern office aesthetic
- Precision production supporting repeatability and streamlined installation
- Early design-build collaboration to optimize constructability and efficiency

Project and precast scope

- Rectangular Beams – 4 pcs (134 lf)
- Stick Columns – 5 pcs (50 lf)
- Double Tees – 24 pcs (17,521 sf)
- Architectural Insulated Walls – 76 pcs (18,708 sf)
- Structural Solid Walls – 12 pcs (2,676 sf)

Project Team

Architect: **HGA**
Engineer: **HGA**
Contractor: **Adolfson & Peterson Construction Inc.**
Owner: **Metropolitan Council**
Precaster: **Wells**
Precast Specialty Engineer: **Wells**
PCI Certified Erector: **Wells**
Location: **St. Paul, MN**
Year of Completion: **2025**
Photo Credits: **Jasper Lazor Photography**



Winnebago Fire and EMS



The Winnebago Fire and EMS Building brings the Tribe's Fire Department, EMS, Community Health Representatives (CHR), and Motor Vehicle Operators (MVO) together under one roof. Designed to enhance emergency response and collaboration, this modern facility reflects the Winnebago Tribe of Nebraska's dedication to safety, efficiency, and community resilience. Molin provided both structural and architectural precast concrete for the facility. The load-bearing insulated and non-insulated wall panels create a precast envelope offering strength, energy efficiency, and longevity.

Architectural panels feature a light etch finish and thin brick detailing, forming a triangular criss cross pattern that adds texture, depth, and symbolic meaning to the façade. This design shows how precast can merge cultural identity with modern functionality. The Winnebago Fire and EMS Building is more than a facility; it's a symbol of strength and unity. Through the use of precast concrete, the Tribe has made a lasting investment that honors heritage while protecting future generations.

Precast concrete was selected for its durability, speed of construction, and ability to support long-span apparatus bays. Cultural identity is reflected through textured precast panels and embedded brickwork,

while cast-in-place and polished concrete floors expose local aggregates and support heavy emergency vehicles with integrated heating systems. The project demonstrates how concrete can unify resilience, cultural meaning, and operational performance.

Project and precast scope

- 159 pieces (21,500 sf) of trim, smooth grey and insulated architectural precast panels with cast-in thin brick and light etch finishes

Award Winning Project

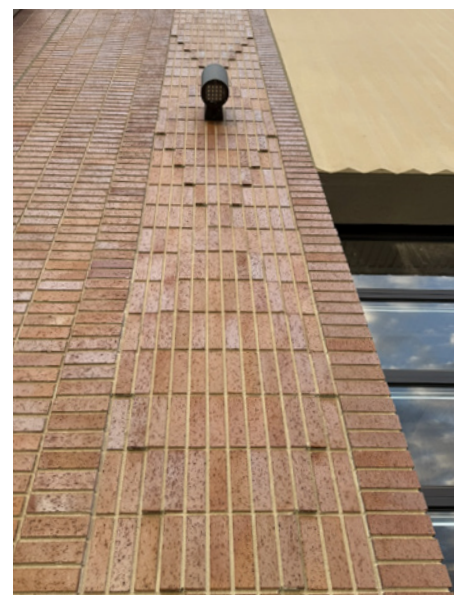
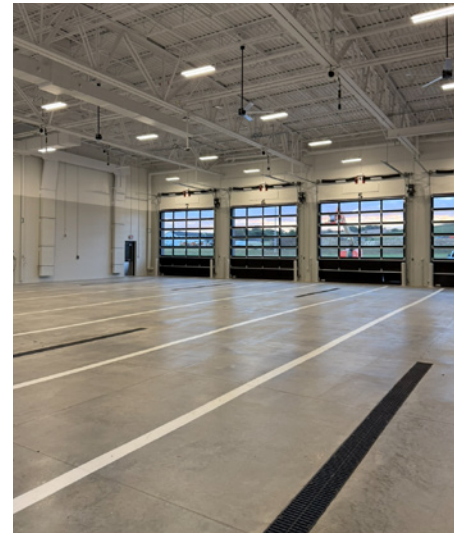
- **2025 Award of Excellence Winner** for the use of concrete in Nebraska awarded by the American Concrete Institute - Nebraska Chapter.

Project Team

Architect: **LEO A DALY**
Engineer: **LEO A DALY**
Contractor: **MCL Construction**
Owner: **The Winnebago Tribe of Nebraska**
Precaster: **Molin Concrete Products**
Thin Brick Supplier: **Endicott**
Location: **Winnebago, NE**
Year of Completion: **2025**



www.molin.com



Portland Avenue Bridge



The replacement of the Portland Avenue Bridge in Bloomington, Minnesota, serves as a premier example of how strategic logistics and precast innovation can solve complex infrastructure challenges. Tasked with accommodating the widening of I-494, County Prestress & Precast, LLC manufactured and delivered 34 prestressed bridge girders during a critical window in September 2025. Because the project took place over one of the state's busiest transit arteries, minimizing traffic disruption was the primary objective. By opting for a precast solution, the project team was able to expedite the construction timeline significantly, ensuring the structural components arrived ready for immediate installation.

To honor strict overnight lane closure windows, delivery crews unloaded a girder every 20 minutes between 10 PM and 4 AM. This pace allowed all 34 girders to be delivered in two nights, limiting highway lane closures to 12–14 hours. This model ensured I-494 reopened to commuters each morning, avoiding the delays typically associated with urban bridge replacements.

Beyond the logistics, the choice of prestressed concrete ensures the Portland Avenue Bridge will remain for decades. Specified for their exceptional strength-to-weight ratio and resistance to cracking, these girders are designed to withstand heavy traffic demands while reducing long-term maintenance costs. County Prestress & Precast provided a solution that met

demanding structural specifications and an aggressive schedule, proving that modern infrastructure upgrades don't have to come at the cost of community mobility.

Key Project Attributes & Precast Scope

- Prestress bridge girders - 34 pcs
- 87 ft, 9 in girder length
- Delivered in just two nights to limit lane closures
- Service life up to or exceeding 75 years

Project Team

Precast Producer: **County Prestress & Precast, LLC**

Contractor: **Lunda Construction**

Location: **Bloomington, MN**

Year of Completion: **2025**



countyprestress.com

Albany Area Early Learning Center



Albany Area Schools transformed the former Albany Hospital site into a revitalized campus addition that supports both education and community resilience. The project addresses district-wide space constraints while reinvesting in a vacated local facility, creating a resource that blends learning, safety, and long-term community value.

The centerpiece of the expansion is a new 40,500 sf gymnasium designed not only

for athletics and student activities, but also to meet ICC 500 storm shelter standards. Visually, the building draws inspiration from the surrounding Minnesota landscape. Custom reveals echo the rhythm of trees and waves, while three distinct finishes—water wash, acid etch, and sandblast—create depth and texture across the façade. The result is a durable, climate-ready facility that reflects its regional roots while serving as a safe haven during severe weather events.

The combination of structural performance, aesthetic versatility, and production precision allowed the prefabricated system to deliver a resilient, visually distinctive facility that serves students and the broader community for generations to come.

Key project attributes

- Architectural insulated walls – acid etch, sandblast, and waterwash finishes
- Custom reveal patterns meant to resemble trees and waves.

Project and precast scope

- Architectural insulated walls - 34 pcs (12,877 sf)
- Structural solid walls - 4 pcs (409 sf)
- Double tees - 16 pcs (9,056 sf)

Project Team

Architect: **Wold Architects and Engineers**

Engineer: **BKBM Engineers**

Contractor: **ICS**

Owner: **Albany Area Schools**

Precaster: **Wells**

Precast Specialty Engineer: **Wells**

PCI Certified Erector: **Wells**

Location: **Albany, MN**

Year of Completion: **2025**



wells.build



Papillion Water Treatment Plant Accessory Building

The Papillion Water Treatment Plant Accessory Building stands as a critical infrastructure addition for a city experiencing historic residential and commercial growth. As Papillion, Nebraska, continues to expand, this industrial facility was designed to provide essential storage for department vehicles and equipment, while offering the necessary space for maintenance activities and future staff expansion. By utilizing a precast concrete envelope, the city was able to meet an aggressive construction

schedule, achieving full erection of the primary structure in just one week. This speed of high-quality construction ensured that the facility could be operational quickly to support the community's rapidly evolving utility needs.

The structural solution for the accessory building consisted of 66 total exterior load-bearing wall panels. The project featured 61 insulated prestressed panels and 5 solid 12-inch pieces, finished with a standard

grey acid etch to provide a clean aesthetic. This project highlights the advantages of precast in the industrial sector, where the combination of load-bearing capabilities, cost-effectiveness, and rapid on-site assembly provides unmatched value for growing municipalities.

Key Project Attributes

- 6-4-4 insulated prestressed panels - 61 pcs
- Solid 12-inch panels - 5 pcs
- 4-inch extruded insulation
- Gray acid etch finish

Project Team

Architect: **HDR**

Engineer: **HDR**

Contractor: **Samson Construction**

Owner: **City of Papillion, NE**

Precaster: **Coreslab Structures (Omaha) Inc.**

PCI Certified Erector: **Atlas Steel Erection**

Location: **Papillion, NE**

Year of Completion: **2025**

Photo Credit: **Matt Corbitt**



www.coreslab.com



NEED CREDITS?



AIA
Continuing
Education
Provider

Check out our upcoming webinars • pcimidwest.org

Associate Members

Abrasives Inc.

4090 Hwy 49
Glen Ullin, ND 58631
Russell Raad - 701-348 3610

Advanced Concrete Technologies

300 Portsmouth Avenue
Greenland, NH 03840
603-431-5661
www.concretebiz.com
Charles Watkins
cwatkins@concretebiz.com
Josh Hallenbeck
jhallenbeck@concretebiz.com

Afinitas

www.afinitas.com
Jimmy Grant
jimmy.grant@afinitas.com

ALL PLAN

8333 Glynoaks Drive, #200
Lincoln, NE 68516
www.allplan.com/us_en
Kelsi Burney – 402-326-5088
kburney@allplan.com

ALP Supply

300 Ben Fairless Drive
Fairless Hills, PA 19030
www.alpsupply.com
800.332.7090
Mark Ronning – 215-359-7279
mronning@alpsupply.com

American Engineering Testing

550 Cleveland Avenue North
Saint Paul, MN 55114
800-972-6364
www.teamaet.com
Gerard Moulzolf

Architectural Polymers, Inc.

1220 Little Gap Road
Palmerton, PA 18071
610-824-3322
www.apformliner.com
Marshall Walters
marshall@apformliner.com

Ash Grove Cement

1101 Cody Street
Overland Park, KS 66210
Steve Wobken 888-334-1401
steve.wobken@ashgrove.com

Atharor Steel

2550 Gray Falls Drive, Suite 216
Houston, TX 77077
www.atharorsteel.com
281-741-1265
Patrick Gregoire – 713-291-7760
pgregoire@atharorsteel.com

Beton-Stahl, Inc.

800 Wilson Ave #206
Menomonie, WI 54751
715-231-2040
www.beton-stahl.com
Corey Leith
info@beton-stahl.com

Bob's Sparkle Wash

1135 114th Lane NW
Coon Rapids, MN 55448
763-225-6500
www.sparklewash.com/centralmn/
Scott Walters – 763-225-6211

CHRYSO

62 Whittemore Avenue
Cambridge, MA 02140
www.gcpat.com
Dan Drenth – 630-391-8377
daniel.drenth@gcpat.com

Commercial Metals Company

1 Steel Mill Drive
Seguin, TX 78155
www.cmc.com
830-372-8284
Jon Kinnischtke - 719-240-0514
jon.kinnischtke@cmc.com
Zach Honeyman - 813-514-5217
zachary.honeyman@cmc.com

CONAC

4475 River Green Pkwy, Suite 100
Duluth, GA 30096
www.conacweb.com
800-336-2598
Farid Sadri – 800-336-2598
fsadri@conacweb.com
Tony Chinn – 770-212-1575
tchinn@conacweb.com

Cresset Chemical Company

13255 Main Street, Box 367
Weston, OH 43069
800-367-2020
www.cresset.com
Jim Renda - 419-669-2041
jim@cresset.com

Dayton Superior

1125 Byers Road
Miamisburg, OH 45342
www.daytonsuperior.com
Adam Stenberg – 612-364-4158
adamstenberg@daytonsuperior.com

DRL Drafting and Design

1608 Commercial Blvd
Chippewa Falls, WI 54728
715-726-9656 - www.DRLDD.com
Don Loew 715-598-0571
don@drldd.com

e.Construct.USA, LLC

11823 Arbor Street, Suite 200
Omaha, NE 68144
www.econstruct.us
402-884-9998
Bradley Schipper - 402-680-5709
brad.schipper@econstruct.us
Alec Stubbe - 402-314-1893
alec.stubbe@econstruct.us

Egan Company

11611 Business Park Blvd N
Champlin, MN 55316
763-595-4361
https://Intellibatch.eganco.com
Don Weirens - 763-354-8325
djw3@eganco.com

Elematic Inc

19745 Sommer Drive Suite A
Brookfield, WI 53045
www.elematic.com
262-798-9777
Pekka Hitunen - 262-798-9777

Endicott Thin Brick & Tile LLC

PO Box 645
Fairbury, NE 68352
www.endicott.com
Rep: Dean Schmidt 402-729-3315

Eriksson Technologies, Inc.

13097 N Telecom Parkway
Tampa, FL 33637
https://www.eriktech.com/
813-989-3317
Joanne Dyer, Roy Eriksson

Federal White Cement

413 E Palmetto Pk Rd #644
Boca Raton, FL 33432
www.federalwhitecement.com
Zack Devecchis – 561-699-1508
zdevecchis@federalwhite.com

Fister Quarries Group / Fister Chemicals and Accessories Group

1150 Lyon Road
Batavia, IL 60510
www.fisterinc.com
www.fisterquarries.com
800-542-7393
800-339-9534
Chris Fister – 630-333-6557
cfister@fisterquarries.com
David Whelan – 630-333-6555
david@fisterquarries.com

Associate Members

GCC of America

600 S Cherry St. #1000
Glendale, CO 80246
www.gccusa.com
Chuck Cox - ccox@gcc.com
Scott Ruby - sruby@gcc.com

Hamilton Form Company

7009 Midway
Fort Worth, TX 76118
www.hamiltonform.com
817-590-2111
sales@hamiltonform.com

Hayden-Murphy Equipment Co, Inc.

9301 E Bloomington Fwy
Minneapolis, MN 55420
www.hayden-murphy.com

Heidelberg Materials

12300 Dupont Avenue South
Burnsville, MN 55337
https://www.heidelbergmaterials.us
Chad Hanson – 952-412-6932

IconX LLC

211 Saddle Ridge Loop
Edwards, CO 81632
913-208-4274
Joel Foderberg
Joel@iconxusa.com
Davis Foderberg
Davis@iconxusa.com

ILoca Services, Inc.

9S104 Frontenac Street
Aurora, IL 60504
https://semitrailers.net/
Joe Trost – joe@semitrailers.net

Industrial Services International

10310 Governor Lane Blvd
Williamsport, MD 21795
www.isi-na.com
240-618-8827
Deven Swanson – 240-618-8827
deven.swanson@isi-na.com

Innovative Brick Systems

1745 Panorama Point
Lafayette, CO 80026
www.mbrick.com | 720-890-6032
Sherry Cooney – 303-898-7489
sherry@mbrick.com

Insteel Wire Products

1373 Boggs Dr
Mt. Airy, NC 27030
www.insteel.com
800-334-9504
Rep: Randy Plitt - rplitt@insteel.com

Iowa Steel & Wire Company

1500 W Van Buren, PO Box 156,
Centerville, IA 52544
www.okbrandwire.com
800-325-5118
Troy Selvy - 641-954-4603
tselvy@okbrand.com

JVI Inc.

7131 N. Ridgeway
Lincolnwood, IL 60712
www.jvi-inc.com
800-742-8127
Todd Adams – 773-251-6344
todd@jvi-inc.com

Kafka Granite, LLC

550 E State Highway 153
Mosinee, WI 54455-1741
www.kafkagranite.com
Jason Chilson - jchilson@kafkagranite.com

Kansas City Brick Company

2001 S 45th Street
Kansas City, KS 66106
913-287-7200
www.kcbrick.com
Contact: Evan Schnegelberger

Kingspan Insulation, LLC

2100 Riveredge Pkwy
Atlanta, GA 30328
800-227-7339
www.kingspan.com/us/en
Chris Mays – 770-862-7209
chris.mays@kingspan.com

Leviat

6467 S Falkenburg Rd
Riverview, FL 33578
www.leviat.com
Angie Utterback – 515-290-4073
angie.utterback@leviat.com

Masonry & Precast Specialty Services

726 N Frontier Rd
Papillion, NE 68046
www.masonryprecast.com
402-306-6004
Craig Christensen

Master Builders Solutions

23700 Chagrin Blvd
Beachwood, OH 44122
800-628-9990
www.master-builders-solutions.com
Jason Pitcole - 216-496-6303
jason.pitcole@masterbuilders.com

Metro Brick Inc.

3314 Winpark Drive
Crystal MN 55427
Office (952) 417-0200
Fax (952) 417-0204
www.metrobrickinc.com

METROBRICK

1201 Millerton Street SE
Canton, OH 44707
www.metrothinbrick.com
Dianne Young - 888-325-3945
dyoung@ironrock.com

Mi-Jack Products, Inc.

3111 W. 167th Street
Hazel Crest, IL 60429
708-596-5200
https://mi-jack.com/
Brent Nelson 708-955-0381
bnelson@mi-jack.com

Nawkaw

170 Whitetail Way
Bogart, GA 30622
www.nawkaw.com | 866-462-9529
Dave Ellis

Nordic

514 22nd Ave W
Alexandria, MN 56308
320-762-0742
www.nordicbrick.com/
Neil Jensen 320-815-0829

nVent LENTON

34600 Solon Road
Solon, OH 44139
800-753-9221
www.erico.com
Cristian Garcia - 224-200-0639
cristian.garcia@nvent.com

Owens Corning

PO Box 177
Lambsburg, VA 24351
www.owenscorning.com
336-755-0419
Jim W. Hoenig 366-755-0419
jim.hoenig@owenscorning.com

Peikko

327 N 4th Ave
Wasau, WI 54401
www.peikko.com
Colin Butler – 715-721-0722
colin.butler@peikko.com

Progress Group

165 Fennell Street
Winnipeg, MB Canada
www.ultraspan.ca
Halil Uysun – 204-229-9783
halil.uysun@ultraspan.ca

RATEC America Corporation

6003 126th Avenue North
Clearwater, FL 33760
www.ratec.org
727-363-7732
Tim Reymann – 727-481-2906
treymann@ratec.org

Associate Members

Shuttlelift

49 E Yew Street
Sturgeon Bay, WI 54235
www.shuttlelift.com
920-743-8650

Sika Corporation

1515 Titanium Drive
Ottawa, IL 61350
www.usa.sika.com

Splice Sleeve North America, Inc.

135 N Old Woodward Ave #222
Birmingham, MI 48009
www.splicesleeve.com
877-880-3230
AJ.Ishikawa.aishikawa@splicesleeve.com

Standley Batch Systems, Inc.

505 Aquamsi Street
Cape Girardeau, MO 63703
800-325-8084
www.StandleyBatch.com
Jim Mantz – jim@standleybatch.com

Sumiden Wire Products Corp.

710 Marshall Stuart Drive,
Dickson, TN 37055
www.sumidenwire.com
Matt Speedy - 614-537-5988

Summit Materials:

Continental Cement

<https://summit-materials.com/>
Dave Meyer 612-889-5236
david.meyer@continentalcement.com

Summitville Thin Brick

16364 US 644
Summitville, OH 43962
www.summitville.com
Steve Barnhardt – 859-229-7786
sbarnhardt@summitville.com
Jeff Johnson – 330-831-6457
jjohnson@summitville.com

Sylvan Products, LLC

7400 SW Cherry Drive
Portland, OR 97223
503-639-9000
www.sylvan-products.com
Bryan White – 971-250-1672
bwhite@sylvan-products.com

TCC Materials

2025 Centre Pointe Blvd
Mendota Heights, MN 55120
www.tccmaterials.com
Eric Wymer – 651-286-1254
ewymer@tccmaterials.com

UFP Concrete Forming Solutions

2221 Clayton Place, Lot 1
Berthoud, CO 80513-9322
www.ufpconcrete.com
John Bowser 724-321-3688
jbowser@ufpi.com

US Formliner

370 Commerce Blvd
Athens, GA 30606
www.usformliner.com
Zach Morrison, PE
616-552-3958
Zach.morrison@usformliner.com

Vacuworx

10105 East 55th Place
Tulsa, OK 74146
www.vacuworx.com
912-259-3050
Justin Hendricks
918-591-3015
justinh@vacuworx.com

West Central Steel, Inc.

105 19th Street NW
Willmar, MN 56279
www.wcsteel.com
320-235-4070
Jeff Allinder - 320-214-5228
jallinder@wcsteel.com

Wire Mesh Corporation

25219 Kuykendahl Road
The Woodlands, TX 77375
www.wmc-us.com | 877-962-9473
Rusty Smith – 904-832-6592
rustys@wmc-us.com

Wysan Precast Services LLC

6189 170th Street North
Hawley, MN 56549
218-486-5100
www.wysanprecastservices.com
Paul Nelson – 507-380-9423

If you are a PCI Associate Member and need to update your listing or if your company is interested in becoming a PCI Associate Member, please contact Mike Johnsrud at mike@pcimidwest.org.

YOU MATTER AND WE'RE HERE TO HELP!

In the construction industry, mental health has reached a crisis level, and we recognize the need for additional support. Many employers find themselves without the necessary resources to effectively address the mental health challenges encountered



by their employees, with particular emphasis on the male demographic within their organizations.

Our campaign, “You Matter,” is more than just a tagline; it’s a heartfelt affirmation of the value we place on every individual within our community. We believe in fostering an environment that acknowledges the challenges individuals may face and actively supports their mental health journey.

Recognizing the need for mental health and suicide prevention resources within our industry. We understand the construction field, with its unique set of challenges and

pressures, requires various support systems, including those available below.

Together, we can break down the stigma surrounding mental health and create a culture where seeking help is not only accepted but encouraged. At PCI, we are here to help. You Matter, and so does your mental health. Explore the resources we’ve gathered for you by using the QR code above. Let’s build a stronger, more resilient community together.



Producer Members

Key:

**Architectural
Structural**

Bridge – Transportation

	Architectural Precast	Architectural Trim	Beams/Columns	Wall Panels	Poles	Hollow-core Slabs	Single Tees	Double Tees	Stadium Seats	Modular Cells	Soundwalls	Piles	Boxed Beams/Slabs	I Beams/Girders
Advanced Precast Co. (Mike Decker) Dyersville, IA, 563-875-2615 • www.advancedprecastcompany.com	•			•		•	•							
Collins Precast, LLC (Joey Wipf) Iroquois, SD, 605-625-3123 • www.collinsprecast.com	•	•	•	•			•	•	•		•			
Concrete Industries, Inc. (Ryan Nelson) Lincoln, NE, 402-434-1800 • www.concreteindustries.com			•	•		•	•	•				•	•	•
Coreslab Structures (Kansas) Inc. (Dennis Drews) Kansas City, KS, 913-287-5725 • www.coreslab.com											•	•	•	•
Coreslab Structures (Missouri) Inc. (Michael Saint) Marshall, MO, 660-886-3306 • www.coreslab.com	•		•	•			•	•	•				•	•
Coreslab Structures (Omaha) Inc. (Todd Culp) Bellevue, NE, 402-291-0733 • www.coreslab.com	•	•	•	•				•	•	•	•	•	•	•
County Materials Corp. Roberts, WI (Steve Hoelsing, 800-289-2569) • Bonne Terre, MO (Scott Boma, 573-358-2773) • www.countymaterials.com	•	•	•	•		•			•	•	•	•	•	•
Crest Precast Concrete, Inc. (Gary Mader) La Crescent, MN, 507-895-2342 • www.crestprecastconcrete.com	•	•	•								•		•	
Crossland Prefab (Shay Laurance) Columbus, KS, 620-429-1414 • www.crossland.com	•		•	•										
Enterprise Precast Concrete, Inc. Omaha, NE (Martin Lane) 402.895.3848 • Overland Park, KS (Dirk McClure) 913-312-5616 • Kansas City, KS (Shawn Wentworth) • www.enterpriseprecast.com	•	•	•											
Fabcon Savage, MN 952-890-4444 Columbus, OH, Mahoney City, PA and Pleasanton, KS • www.fabcon-usa.com			•								•	•		
Mid America Precast, Inc. (Rod Tanner) Fulton, MO, 573-642-6400 • www.midamericaprecast.com	•	•	•	•	•					•	•			
Molin Concrete Products Co. (Bob Clauson) Lino Lakes, MN, Ramsey, MN and Sioux Falls, SD, 651-786-7722 • www.molin.com	•		•	•		•		•						
MPC Enterprises, Inc. (Jeff Moehle) Mt. Pleasant, IA, 319-986-2226 • www.mpcent.com	•	•	•	•	•		•	•	•	•	•			•
PDM Precast, Inc. (Adam Petersen) Des Moines, IA, 515-243-5118 • www.pdmprecast.com	•		•	•		•	•	•	•					
Prestressed Casting Co. (David Robertson) Springfield, MO, 417-869-7350 • www.prestressedcasting.com	•		•	•			•	•	•		•			
Prestressed Concrete (Brian Curtis) Newton, KS, 316-283-2277 • www.preconc.com	•		•	•			•	•	•		•	•	•	•
Rinker Materials (Marcus Orrock) Maple Grove, MN, 763-545-7473 • www.rinkerpipe.com					•						•	•	•	•
SteinBauer LLC (Paul Kleinsasser) Faulkton, SD, 605-324-3302 • www.steinbauerprecast.com	•	•	•	•			•	•			•		•	
Stress-Cast Inc (Jim Markle) Assaria, KS, 785-667-3905			•			•								
Taracon Precast (Mark Wipf) Hawley, MN, 507-380-9423 • www.taraconprecast.com	•		•	•		•	•	•	•		•			
Wells (Greg Roth) Wells, MN, Albany, MN and Maple Grove, MN, 800-658-7049 • wells.build	•	•	•	•		•		•	•		•		•	
Wichita Concrete Pipe (John Oldland) Wichita, KS, 316-838-8651 • www.wichitaconcretepipe.com			•	•							•		•	